

TITULACION ACIDO FUERTE - BASE FUERTE

Concentración de BASE (titulante) : 0,09 M

Concentración de ACIDO (titulado) : 0,10 M

Volumen inicial de ACIDO : 50 ml

Volumen de BASE (ml)	pH
0.00	1.00
5.00	1.08
10.00	1.16
20.00	1.34
30.00	1.54
40.00	1.81
45.00	2.00
50.00	2.30
51.00	2.39
52.00	2.50
53.00	2.65
54.00	2.87
55.00	3.32
55.10	3.41
55.20	3.52
55.30	3.66
55.40	3.88
55.50	4.32
55.60	9.58
55.70	10.09
55.80	10.32
55.90	10.47
56.00	10.58
57.00	11.09
58.00	11.31
59.00	11.46
60.00	11.56
65.00	11.87
75.00	12.15
90.00	12.35

LOCALIZACIÓN DEL PUNTO DE EQUIVALENCIA

Método de Tabulación

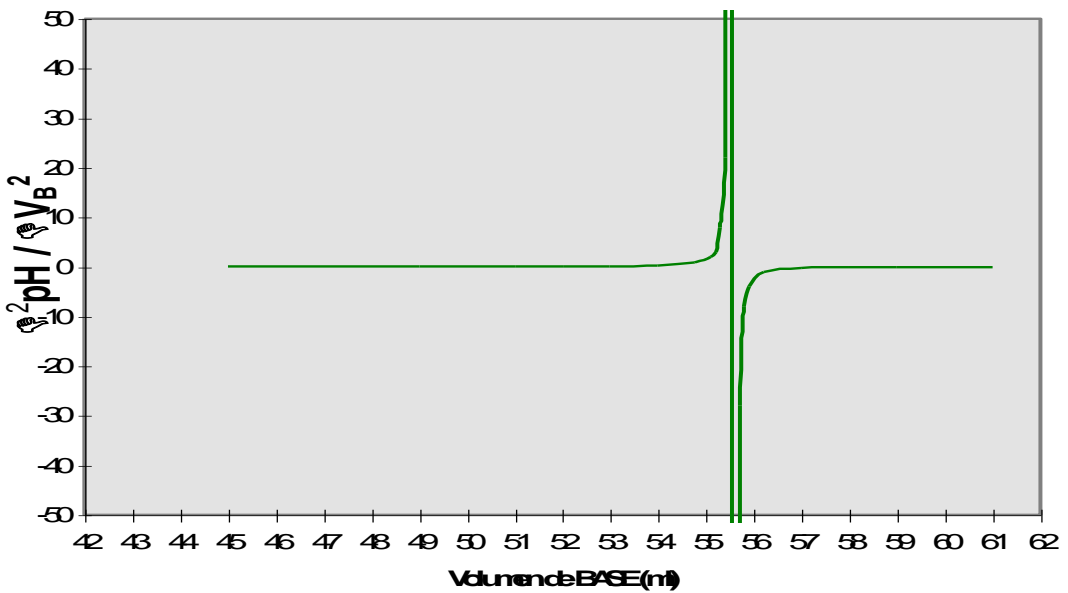
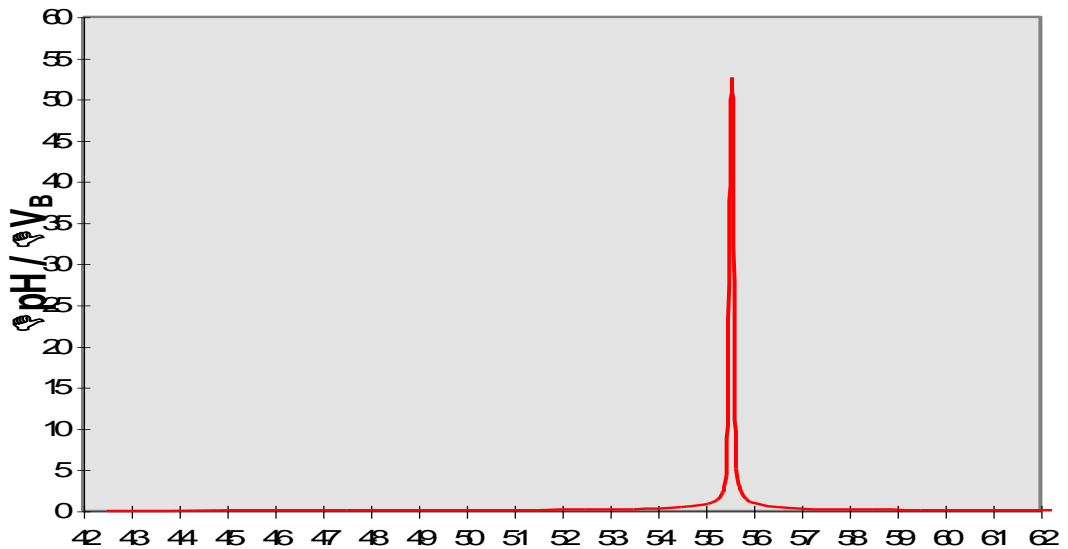
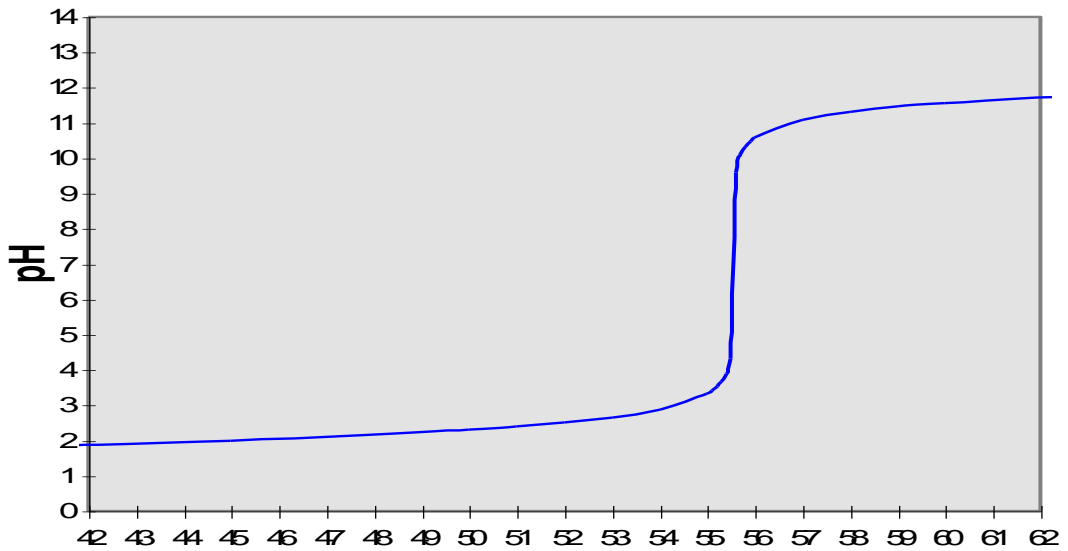
Volumen de BASE (ml)	$\Delta \text{pH} / \Delta V_B$
42.50	0.038
47.50	0.060
50.50	0.090
51.50	0.110
52.50	0.150
53.50	0.220
54.50	0.450
55.05	0.900
55.15	1.100
55.25	1.400
55.35	2.200
55.45	4.400
55.55	52.600
55.65	5.100
55.75	2.300
55.85	1.500
55.95	1.100
56.50	0.510
57.50	0.220
58.50	0.150
59.50	0.100
62.50	0.062

Volumen de BASE (ml)	$\Delta^2 \text{pH} / \Delta V_B^2$
45.00	0.004
49.00	0.010
51.00	0.020
52.00	0.040
53.00	0.070
54.00	0.230
54.78	0.818
55.10	2.000
55.20	3.000
55.30	8.000
55.40	22.000
55.50	482.000
55.60	-475.000
55.70	-28.000
55.80	-8.000
55.90	-4.000
56.23	-1.073
57.00	-0.290
58.00	-0.070
59.00	-0.050
61.00	-0.013

DETERMINACIÓN DEL PUNTO DE EQUIVALENCIA

Método de Tabulaciones

Titulación de 50 ml de ACIDO FUERTE 0,10 M con una BASE FUERTE 0,09 M



Volume de BASE (ml)